

2020 Symposium for Proteomics Core Facility Staff

Educational Opportunities

- **Faculty & Student Workshops on Discovery/Targeted Proteomics**
 - February 11-12th, OKC, OK
 - February 27-28th, Little Rock, AR
 - March 24-25th, OKC, OK
- **Proteomics Core Facility Staff Workshop**
 - January 29-30th, 2020, Little Rock, AR
- **Idearesourceproteomics.org**

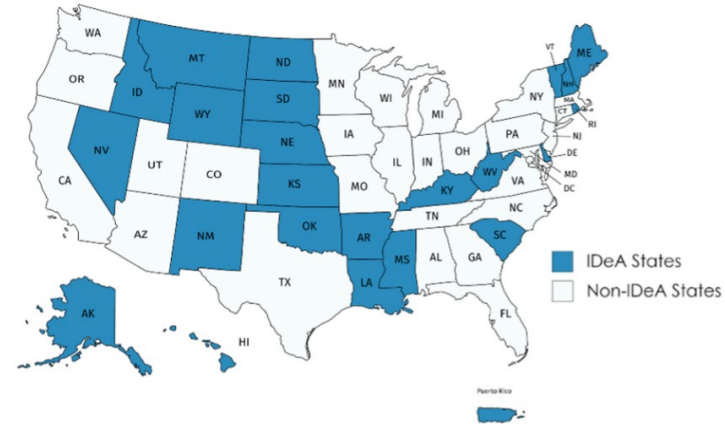
National Institute of General Medical Sciences

IDEA National Resource for

Quantitative Proteomics

Research Core Challenges in IDeA States

- IDeA state challenges
 - State-of-the-art instrumentation
 - Experienced personnel – data collection and analysis
 - Long-term sustainability and maintaining cutting-edge
 - Certainly the case for proteomics core facilities
- Regional duplication of instrumentation and core resources
 - For resources operating expensive instruments, regional duplication can be an inefficient investment of NIGMS funding
 - How can we work together to leverage resources?



IDeA National Resource for Quantitative Proteomics

- PAR-16-172 “Limited Competition: IDeA Core Optimization”
 - Alan Tackett at UAMS – Mike Kinter at OMRF
 - 2016 Admin Supplements to Arkansas and Oklahoma INBREs (Cornett, Akins)
- **Goal:** regional consolidation between two proteomics groups in Arkansas and Oklahoma to create a quantitative proteomics resource to provide opportunities for education, synergy, and instrument access for the IDeA network



Infrastructure

Resources

- Combined 7,200 sq ft
- 10 personnel sample prep & instrument operation
- 5 proteomics-trained bioinformaticians
- 2 administrators
- HPC & data storage
- LC-Mass spectrometers

Orbitrap Eclipse

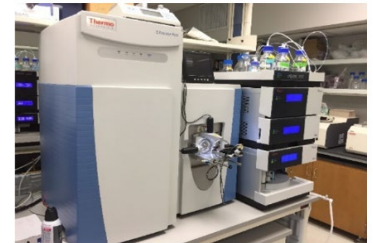
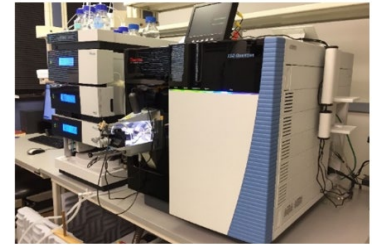
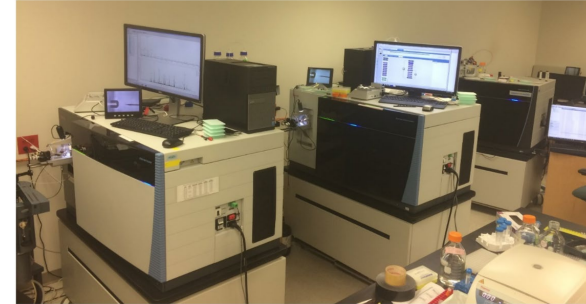
2x Orbitrap Fusion

Orbitrap Lumos

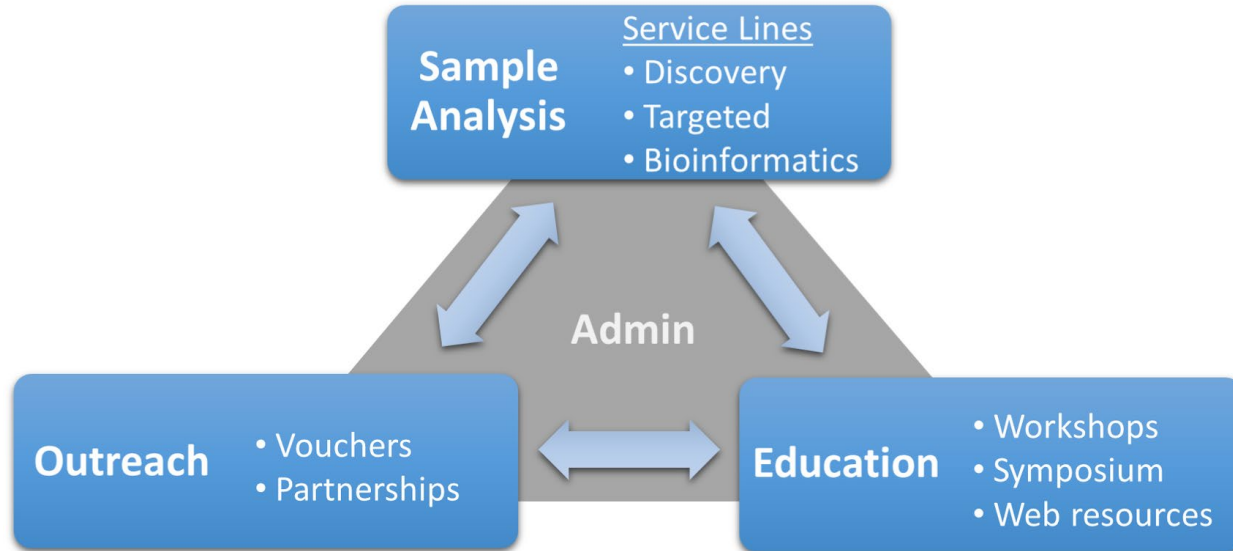
Obritrap QE Plus

Orbitrap Exploris

Quantiva

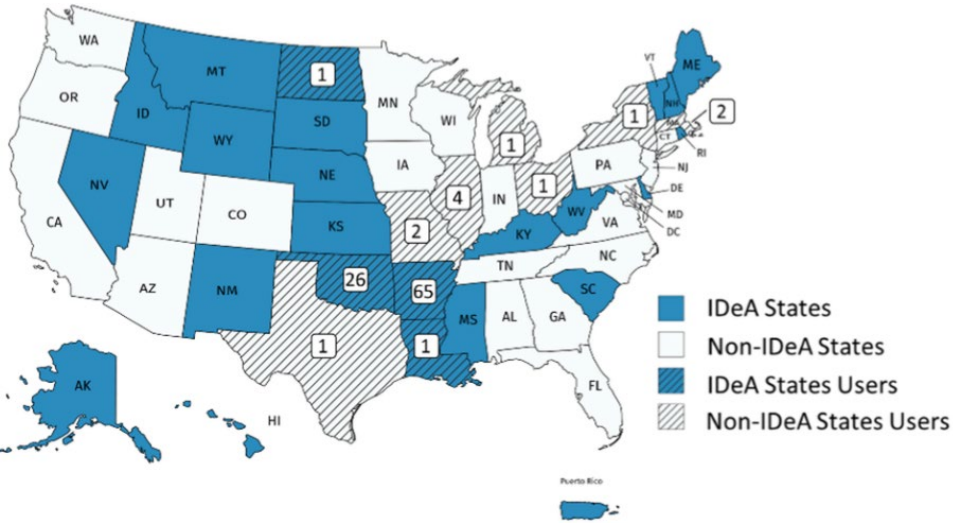


Components & Activities



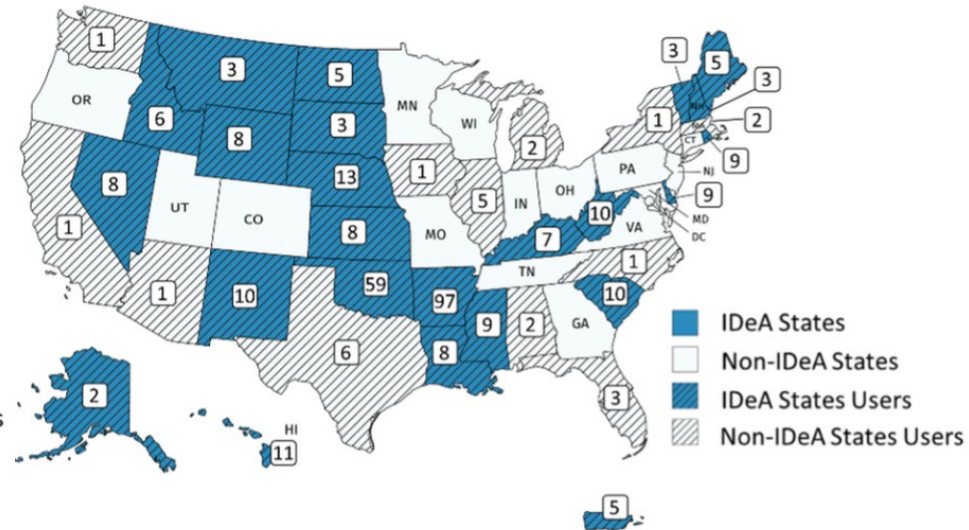
Expansion of IDeA State Users

2014-2016



11% IDeA states served

2017-2019



100% IDeA states served

Engaging the Administration

- Operational location
 - Department-housed
 - Institutionally-housed
- Annual evaluation
 - Internal evaluation by administration:
 - Importance to the institutional mission and not just funds
 - Compare rates to external service providers
 - Subsidy discussions and planning for the future
 - Peer external evaluations
 - Leveraging this working group
 - Requested through supporting grants: COBRE, INBRE, CTR/CTSA, program grants
- Institutional impact
 - Clear understanding of a recharge mechanism and NIH regulations on cores
 - PIs, grants, program project level grants, manuscripts, students supported
 - Total cost, indirect cost, direct cost